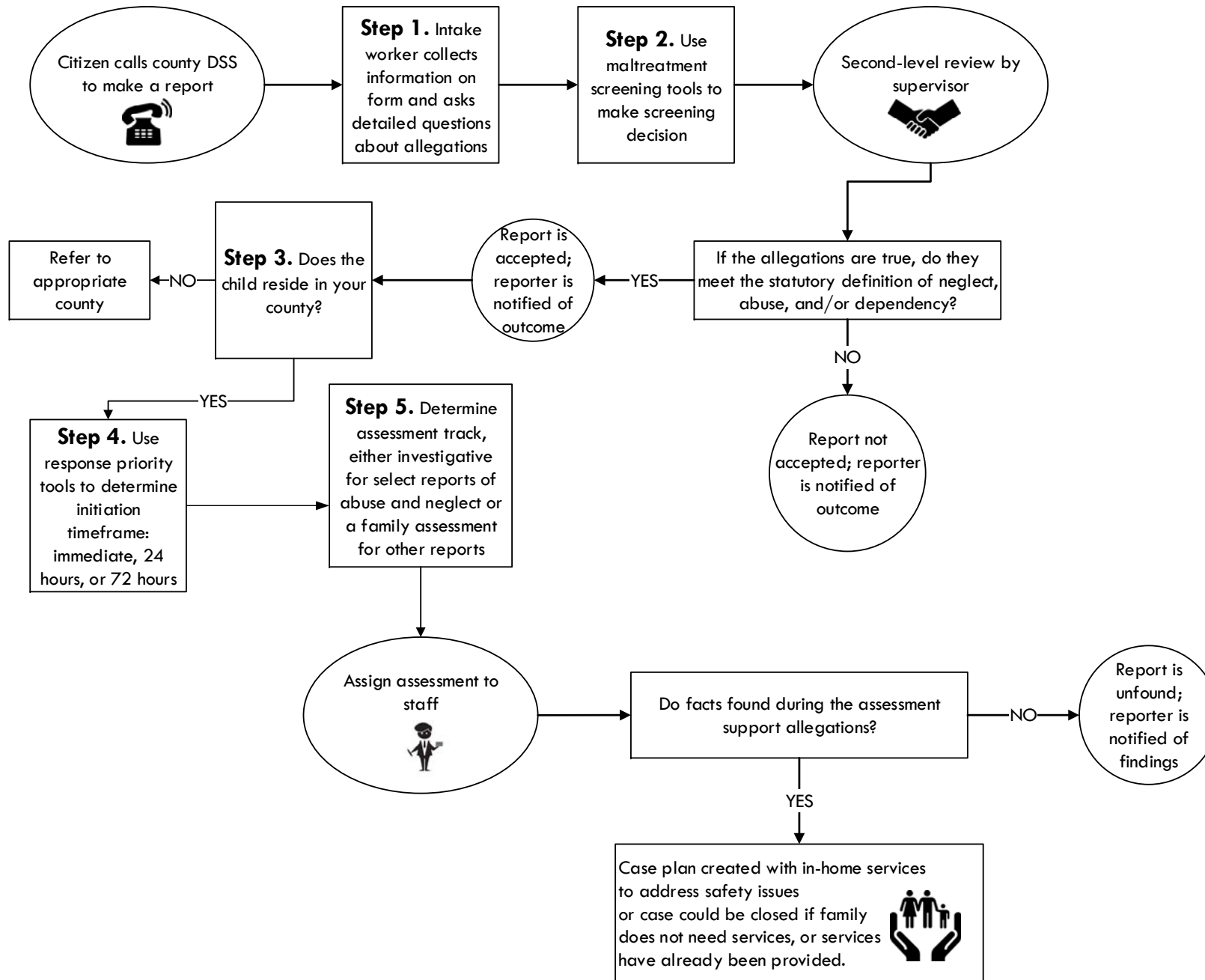
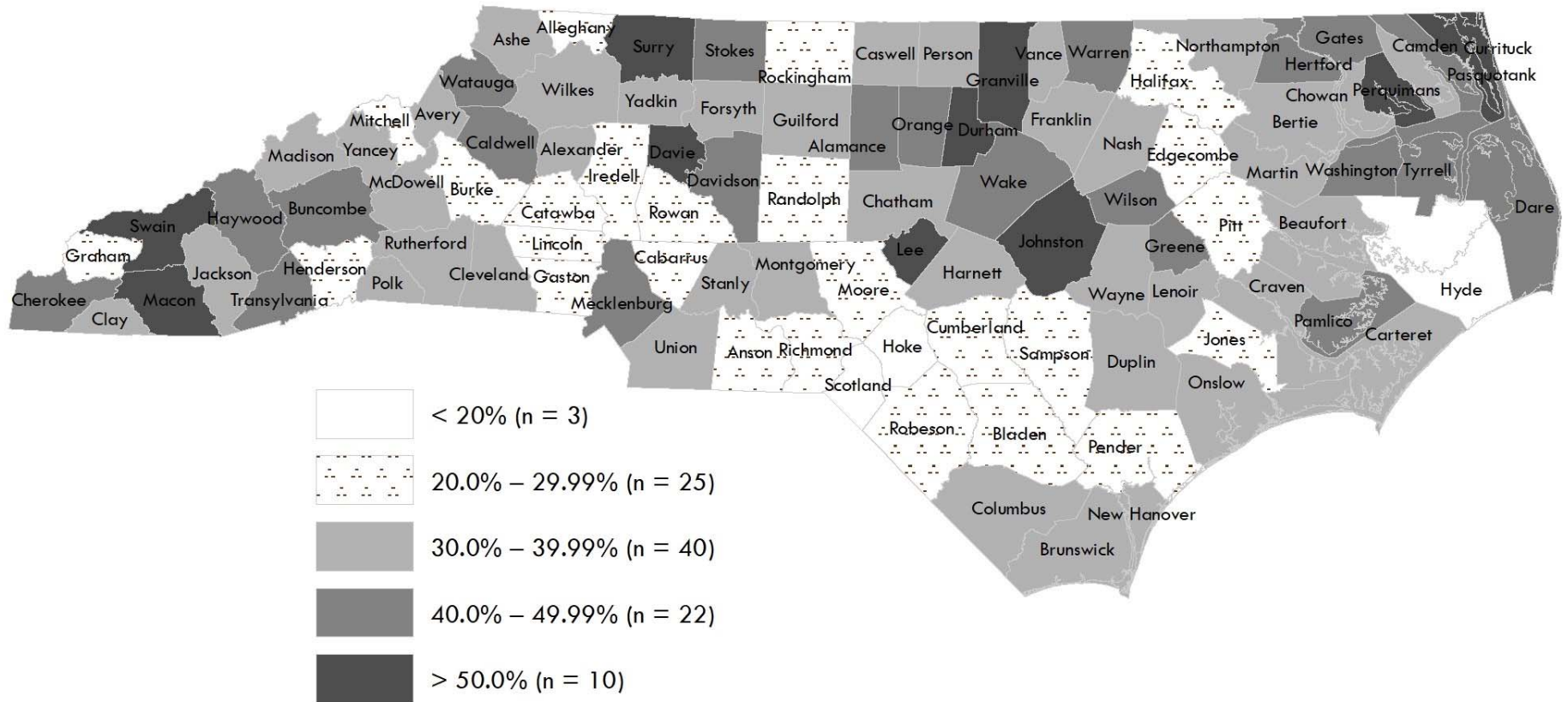


## Exhibit 4: Child Protective Services Report Intake and Screening Process



Source: Program Evaluation Division based on information from the DHHS, Division of Social Services.

## Exhibit 6: Percentage of Child Maltreatment Reports Screened Out by County in 2018



Source: Program Evaluation Division based on data from the Department of Health and Human Services, Division of Social Services.